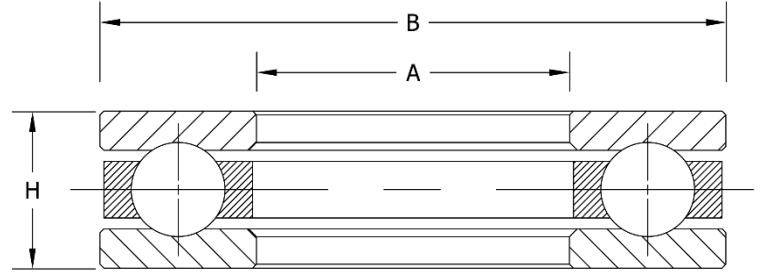




# W Series

## Ball Thrust Bearing

Medium Cross Section  
Grooved Races  
Single Direction  
Separable Axial Contact



PART NUMBER	SHAFT A inch	SHAFT A mm	OD B inch	OD B mm	WIDTH H inch	WIDTH H mm	WEIGHT lbs	WEIGHT kg	DYN. CAP. lbf	STAT. CAP. lbf	SPEED LIMIT rpm
W1/4	0.250	6.350	0.813	20.650	0.375	9.530	0.037	0.017	1053	1170	15000
W5/16	0.313	7.938	1.000	25.400	0.531	13.490	0.084	0.038	1719	2250	11000
W3/8	0.375	9.525	1.000	25.400	0.530	13.460	0.082	0.037	1719	2250	11000
W7/16	0.438	11.113	1.281	32.540	0.625	15.875	0.157	0.071	2835	4005	8000
W1/2	0.500	12.700	1.281	32.540	0.625	15.875	0.150	0.068	2835	4005	8000
W9/16	0.563	14.288	1.406	35.710	0.625	15.875	0.181	0.082	3915	5670	8000
W5/8	0.625	15.875	1.406	35.710	0.625	15.875	0.172	0.078	3915	5670	8000
W3/4	0.750	19.050	1.531	38.890	0.625	15.875	0.192	0.087	3150	4950	7000
W7/8	0.875	22.225	1.656	42.060	0.625	15.875	0.221	0.1	3780	7020	6000
W1	1.00	25.400	1.781	45.240	0.625	15.875	0.234	0.106	3375	5940	5500
W1 1/8	1.125	28.575	1.906	48.410	0.625	15.875	0.254	0.115	3285	5940	5000
W1 1/4	1.250	31.750	2.094	53.190	0.719	18.260	0.355	0.161	5400	10080	4700
W1 3/8	1.375	34.925	2.219	56.360	0.719	18.260	0.379	0.172	5580	10890	4400
W1 1/2	1.500	38.100	2.344	59.540	0.719	18.260	0.404	0.183	4320	8820	4100
W1 5/8	1.625	41.275	2.469	62.710	0.719	18.260	0.434	0.197	5760	12510	3800
W1 3/4	1.750	44.450	2.688	68.280	0.755	19.180	0.547	0.248	5850	13140	3600
W1 7/8	1.875	47.625	2.813	71.450	0.750	19.050	0.564	0.256	5580	12510	3300
W2	2.000	50.800	2.969	75.410	0.750	19.050	0.613	0.278	5580	12510	3200
W2 1/8	2.125	53.975	3.219	81.760	0.875	22.225	0.770	0.349	7830	18000	3000
W2 1/4	2.250	57.150	3.344	84.940	0.875	22.225	0.931	0.422	8280	20250	2800
W2 3/8	2.375	60.325	3.594	91.290	1.000	25.400	1.286	0.583	11340	27450	2600
W2 1/2	2.500	63.500	3.719	94.460	1.000	25.400	1.330	0.603	11160	27450	2600
W2 5/8	2.625	66.675	3.844	97.640	1.000	25.400	1.400	0.635	10350	24300	2500
W2 3/4	2.750	69.850	4.031	102.390	1.000	25.400	1.491	0.676	10890	27450	2300
W2 7/8	2.875	73.025	4.156	105.560	1.000	25.400	1.537	0.697	10890	27450	2300

**Northeast**  
Hauppauge, NY  
1 (800) 645-5088

**Southeast**  
Atlanta, GA  
1 (800) 247-9920

**Midwest**  
Chicago, IL  
1 (800) 325-9696  
Columbus, OH  
1 (888) 700-9144

**Southwest**  
Houston, TX  
1 (800) 233-5567  
Dallas, TX  
1 (800) 500-1015

**West Coast**  
Los Angeles, CA  
1 (800) 722-0655



# W Series

## W Series – Ball Thrust Bearing - Continued

PART NUMBER	SHAFT A inch	SHAFT A mm	OD B inch	OD B mm	WIDTH H inch	WIDTH H mm	WEIGHT lbs	WEIGHT kg	DYN. CAP. lbf	STAT. CAP. lbf	SPEED LIMIT rpm
W3	3.000	76.200	4.375	111.130	1.125	28.580	2.022	0.917	15210	40050	2100
W3 1/8	3.125	79.375	4.500	114.300	1.125	28.580	2.077	0.942	14940	40050	2000
W3 1/4	3.250	82.550	4.813	122.250	1.250	31.750	2.500	1.134	18180	47700	2000
W3 3/8	3.375	85.725	4.938	125.430	1.250	31.750	2.809	1.274	17640	45900	1900
W3 1/2	3.500	88.900	5.063	128.600	1.250	31.750	2.880	1.306	17190	45900	1900
W3 5/8	3.625	92.075	5.188	131.780	1.250	31.750	3.199	1.451	17190	45900	1800
W3 3/4	3.750	95.250	5.313	134.950	1.250	31.750	3.301	1.497	17190	45900	1700
W3 7/8	3.875	98.425	5.688	144.480	1.375	34.930	4.059	1.841	20880	55800	1700
W4	4.000	101.600	5.813	147.650	1.375	34.930	4.148	1.881	20880	55800	1600
W4 1/4	4.250	107.950	6.313	160.350	1.750	44.450	6.754	3.063	29700	81000	1500
W4 1/2	4.500	114.300	6.500	165.100	1.750	44.450	7.850	3.560	29700	81000	1400
W4 3/4	4.750	120.650	7.063	179.400	2.000	50.800	8.800	3.991	39600	108900	1300
W5	5.000	127.000	7.313	185.750	2.000	50.800	10.103	4.582	38700	108900	1300
W5 1/2	5.500	139.700	8.063	204.800	2.193	55.700	13.708	6.217	47700	139500	1200
W6	6.000	152.400	8.688	220.663	2.375	60.325	16.701	7.574	49500	144000	1100
W6 1/2	6.500	165.100	9.406	238.910	2.500	63.500	20.326	9.218	54000	162000	1000
W7	7.000	177.800	10.125	257.180	2.625	66.680	25.000	11.338	59400	181800	900
W7 1/2	7.500	190.500	10.875	276.220	2.750	69.850	29.977	13.595	63000	202500	850



**Materials:** Rings and balls are constructed of thru-hardened 52100 steel.

**Northeast**  
Hauppauge, NY  
1 (800) 645-5088

**Southeast**  
Atlanta, GA  
1 (800) 247-9920

**Midwest**  
Chicago, IL  
1 (800) 325-9696

Columbus, OH  
1(888)700-9144

**Southwest**  
Houston, TX  
1(800)233-5567

Dallas, TX  
1(800)500-1015

**West Coast**  
Los Angeles, CA  
1 (800) 722-0655